



Perry Chapel

BAPTIST CHURCH



Loving God, Loving You

19476 Perry Township Road 380
Warsaw, Ohio 43844
740-327-5800
www.perrychapel.com

[Table of Contents](#)

Mission Statement	3
Vision Statement	3
Declaration of Faith and Teaching	3
History	3
Organizational Chart	7
Standing Boards	7
Staff	7
Church Demographics	14
Perry Chapel Location	18
Services and Education	19
Baptism	19
Social Media	19
Connection Groups	19
Adult Connection Groups	22
Children's Sunday School Classes	22
Wednesday Night	23
Ministries	25
Adult Ministries	25
Youth Group	25
Youth and Children's Ministries	25
Outreach Programs	25
Church Fellowship Activities	25
Outreach Programs	30
Budget Information	33
Personal Testimony Letters	34

Mission Statement
Vision Statement
Declaration of Faith and Teaching
History



Mission Statement

TO MAGNIFY GOD by making disciples who KNOW, SHARE, & MULTIPLY CHRIST

Desire

Loving God, Loving You

Vision Statement

Our purpose is to introduce people to Jesus Christ and help them develop a deep, loving relationship with God

...a relationship that will dramatically change their lives forever.

At Perry Chapel we have **five actions** that help us reach our purposes:

FELLOWSHIP

We build caring relationships through time spent together.

SERVICE

We serve others in the name of Christ.

DISCIPLESHIP

We teach Biblical principles and applications in order to encourage people to grow in Christ.

EVANGELISM

We tell others the "good news" of Christ.

WORSHIP

We encourage people to praise and express devotion to God.

Declaration of Faith and Teaching

1. We believe Scripture is the inspired word of God.
II Tim 3:16; II Peter 1:20-21
2. We believe in one God eternally existing in 3 persons: Father, Son, and Holy Spirit.
Mt 28:19; II Cor13:14
3. We believe that Jesus Christ was begotten by the Holy Spirit, born of the Virgin Mary, and is truly God and truly man.
Luke 1:35; II Cor 13:14
4. We believe man was created by a direct act of God. All humanity is descended from the historical Adam and Eve who sinned and thereby incurred physical and spiritual death (separation from God). All humans are born with a sin nature and become sinners in thought, word, and deed.
Gen 1:26-27; Romans 5:12
5. We believe that Jesus Christ was a propitiatory sacrifice and all who believe in Him are justified by His shed blood.
I Cor 15:3, Rm 5:9
6. We believe in the resurrection of the Lord Jesus Christ, His ascension to Heaven, and His presence there as High Priest and Advocate.
I Cor 15:4, 20; Luke 24:51
7. We believe in the personal, premillennial, and imminent return of our Lord and Savior Jesus Christ.
Mt 24:27, 31; I Th 4:16-17; John 14:3; Titus 2:13
8. We believe that all who receive the Lord Jesus are born again, indwelt by the Holy Spirit, and are incapable of losing their salvation.
John 1:13, 3:1-5; I Cor 3:16, 6:19; I John 5:1
9. We believe in the bodily resurrection of all believers to everlasting blessedness and non-believers to everlasting conscious punishment.
John 5:28; Acts 24:15
10. We believe that the local church is organized for worship, fellowship, Christian education, ministry, evangelism. We observe two ordinances: baptism by immersion and the Lord's Supper.
Ro 6:3-4; Mt 26:26-28, Mt 28:19; I Cor11:23-26
11. We believe marriage as delineated in Scripture is sanctioned by God and is between one man and one woman.
Mt 24:27, 31; I Th 4:16-17; John14:3; Titus 2:13
12. We believe that every person must be afforded compassion, love, kindness, respect, and dignity.

Our History



Perry Chapel Baptist Church has always been a church with a mission to reach out to a rural area of East Central Ohio with the Good News of Jesus Christ. This was the goal of the original 25 founding members in the spring of 1860. In 1899 a new building was completed with the help of men from the congregation on land that was donated to the church. An addition to this building was completed in 1958 for additional classrooms. Several remodels and additions occurred in the 1980s and 1990s. God greatly blessed Perry Chapel in the '90s with a rapidly increasing congregation so a new building was in order. In May 2003, the first service was held in the new building which houses the sanctuary, offices and additional classrooms, nurseries, fireside room and kitchen. The upper floor is additional space for youth programs.

Sunday school was first organized in 1862 and continues to be active to this day. The first mission offering was taken in 1876 and continues to be an integral part of Perry Chapel. Since 1891 music has been a part of every service. It is now a blend of traditional and contemporary with instrumental accompaniment.

Children are considered a great blessing at Perry Chapel. Junior Church is a program of worship and study occurring during the adult worship service. Perry Chapel has had an active youth group for many years. The youth group took their first mission trip in 2002. Since then, they have gone on many mission trips and attend youth conferences as well as weekly meetings.

In 1998 Wednesday Family Night was established. The evening (pre-Covid) consisted of fellowship during a delicious meal followed by various bible studies, youth, and children's programs. At this time Bible studies have resumed. The children's programs and other activities are scheduled to begin August 2021.

The new facility is a multipurpose building allowing Perry Chapel to host a variety of events including Upward Basketball and Cheerleading. The first season began in 2003. It is currently the largest outreach ministry to children and families in the surrounding community. The program is funded by the Snack Shop during the games and the Millersport Sweetcorn Festival at the end of summer.

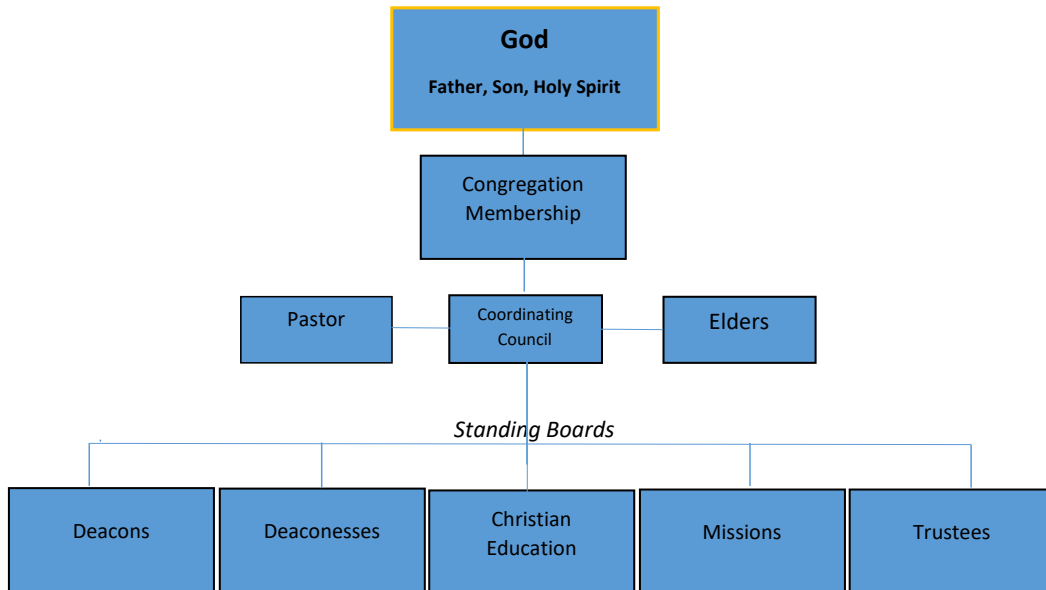
Perry Chapel has had many ministers during its 160 years. The late Reverend David B. Fowls held the position of pastor for 41 years. He began as an interim pastor in 1979 and was unanimously voted into a fulltime position in 1998. The Lord called him home in December 2020.

Organizational Chart

Standing Boards

Staff

Organizational Chart



Standing Boards

Elder Board



Joe Totten, Preston Moore, Scott Robinson, Roy Mizer, Chris Allen, Curtis Lee, Aaron Ashcraft (NP)

Deacon Board



Matt Shupert, John Garber, Rick Wallace, Lane Belangia, Greg Hardesty, Cody Totten, Ben Moore, Rob Totten, Steve Vawters, Jeremiah Johnson (NP), Larry Morningstar (NP), Garrison Sarchet (NP), Wes Sarchet (NP)

Deaconess Board



Julie Holand, Janet Myers, Jennifer Morningstar, Heather Rauscher, Crystal Garber, Nola Veach, Toni Lee, Cathy Mounts, Linda Beach (NP), Vanessa Johnson (NP), Anna Mincks (NP)

Mission Board



Rick Beckly, Judy Fowls, Rob Clifford - Chairman, Karen Mizer, Mary Marshall, Dawn Anglin (NP), Anna Mincks (NP), Breanna Kinsey (NP), Kristen VanWinkle (NP), Scott Robinson (NP)

Christian Education Board



Von Kinsey - Chairman, Carol Kinsey, Amanda Wallace, Julie Holand, Ali Shupert (NP), Crystal Garber (NP), John Garber (NP),

Trustee Board



John Garber, Mike Cummings, Don Arnett, Garrison Sarchet, Tony Jaqua - Chairman

Audio/Visual Team



Andy Mizer, David Beaty, Lane Belangia Chairman

Our Narthex and Sanctuary



Staff



Secretary
Bev Cummings



Office Business
Administrator
Toni Lee



Secretary
Amanda
Wallace



Youth Directors
Von & Carol Kinsey



Custodian
Renina Brenley



Music Directors
Todd Luper, Judy Fowls

Congregational Overview

Perry Chapel Location

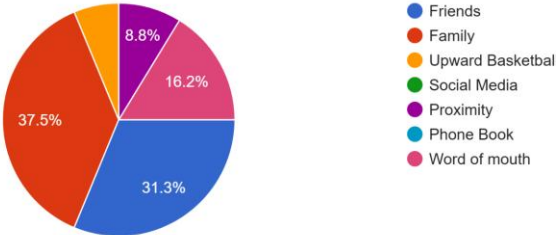
Church Demographics

Data collected October 2025

This data represents households, not just individuals.

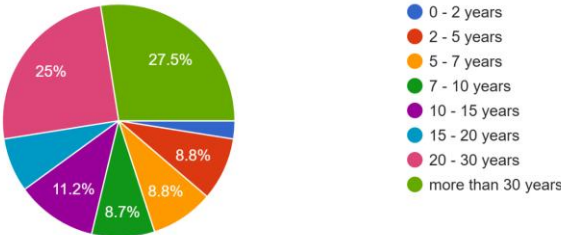
What brought you to Perry Chapel?

80 responses



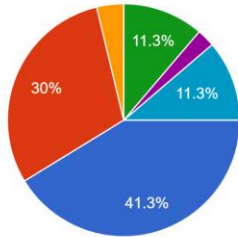
How many years have you been attending Perry Chapel?

80 responses



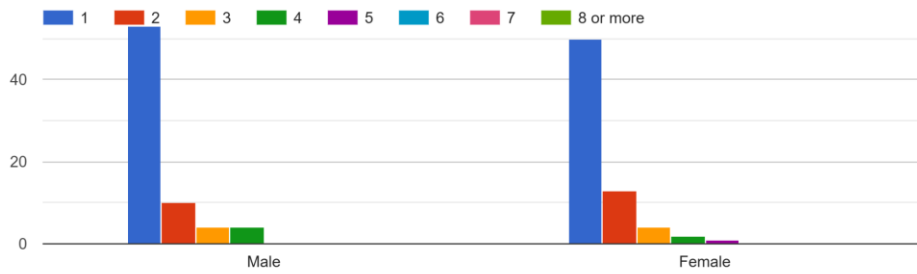
What category does your family fall in?

80 responses

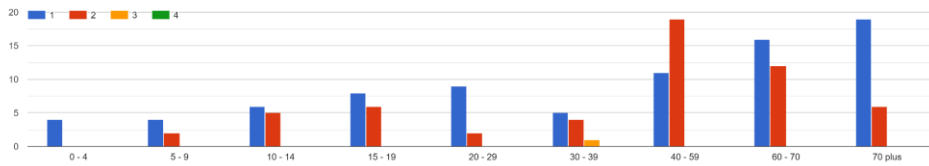


- Married with no children at home
- Married with one or more children at home
- Single parent with one or more children at home
- Single adult
- Widowed with one or more children at home
- Widowed living alone

How many Males and Females live in your home?

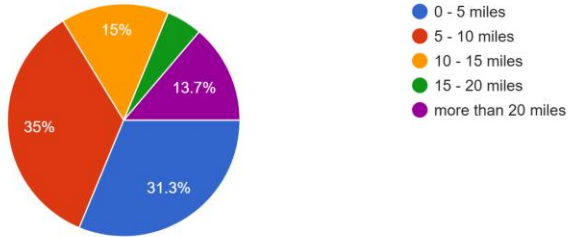


What is the age group of all members in your household?



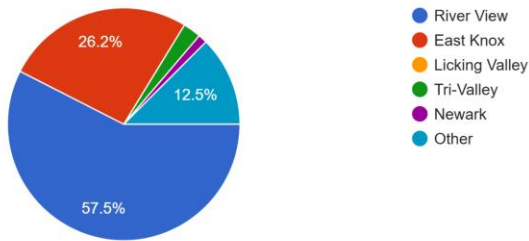
How many miles do you travel to church?

80 responses



What school district do you live in?

80 responses



Perry Chapel by Gender

<u>Male</u>	<u>Female</u>
102 (50.2%)	101 (49.75%)

Attendance Data

● Average Sunday Attendance	2025 162.5 (thru 3 qtrs 2025)
○ Average On-Line Participation	xxx
● Average Sunday School Attendance	xxx

Congregational Overview

Welcome to Perry Chapel Baptist Church, situated on a scenic country road in southwestern Coshocton County, Ohio. On first impression you may think you are “in the middle of nowhere”. However, God has richly blessed us with a dedicated, talented, and diverse congregation who loves the Lord.

Perry Chapel’s worship style is a blend of traditional and contemporary. Music is an important part of our service, both vocal and instrumental, and special numbers are welcomed by both youth and adults. God’s Word and teaching along with The Gospel, are faithfully presented from the pulpit. Hugs, handshakes, and the open sharing of praises and prayer requests are what make us a loving church. We always say, “Once you come through our doors and allow us to love you, you’ll never want to leave”.



The church building includes a modern multipurpose facility that serves our congregation and community with a sanctuary that can seat 450. It easily converts into an activity center providing a large space for other church-related activities and ministries.

Perry Chapel has a small playground for the children to enjoy.

Our former building now houses adult and child connection groups, Junior Church, a lending library, and

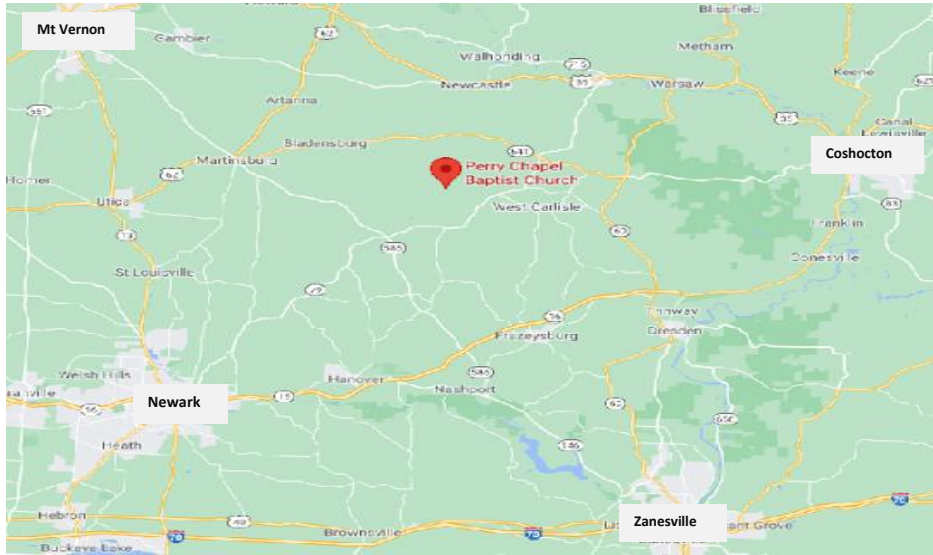


Wednesday evening Kids Club. A kitchen, restrooms, and a Food Pantry also occupy the space. It also has its own cemetery.

Perry Chapel is known in our county and surrounding areas for its generosity, care of, and love for others. We strive to bring Christ to those living in the hills and hollows where God has placed us.

“We stand on the shoulders of those who came before us” and we pray, “May all who come behind us, find us faithful.”

Perry Chapel Location



Miles to: Coshocton - 22, Mt Vernon - 22, Newark - 21, Zanesville - 26

Directions:

From Coshocton - Take SR 541 west to SR79, turn left. Proceed for 4.4 miles to TR 411, turn right. Proceed 500 ft then turn left on TR 382 (2nd street on left). Continue until the road ends at TR 380, turn right. Perry Chapel is approximately 100 yards on the right.

From Mt Vernon - Take OH-586 Southeast to OH 541, turn right. Continue to Jug Run, turn right. Continue to TR 380, turn left. Perry Chapel Church is ahead on right.

From Newark - Take SR 79 north to TR411, turn left. Proceed 500 ft then turn left on TR 382 (2nd street on left). Continue until the road ends at TR 380, turn right. Perry Chapel is approximately 100 yards on the right.

From Zanesville - Take OH-146 W/Newark Rd north for 8.5 miles. Turn right onto OH-586 N proceed 5.6 mi. Take a slight right onto Branch Rd for .5 miles. Merge onto Licking Valley Rd proceed 5.0 mi. Take a Slight right onto OH-79 N for 2.1 miles. to TR411, turn left. Proceed 500 ft then turn left on TR 382 (2nd street on left). Continue until the road ends at TR 380, turn right. Perry Chapel is approximately 100 yards on the right.

Services and Education

Baptism

Social Media

Connection Groups

Services



- Sunday School 9:30
- Sunday 10:40 Worship Service

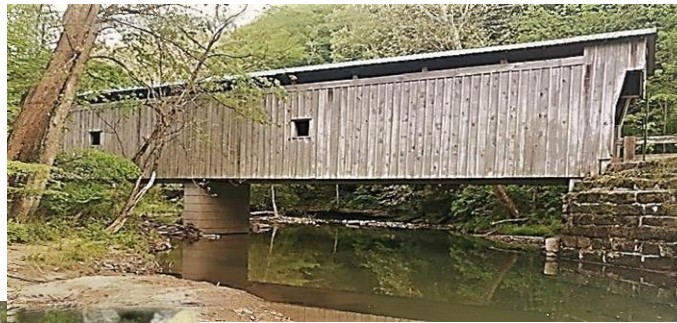
Praise Team



Todd Lupher, Judy Fowls, Toni Lee, Jack Wallace, Amanda Wallace, Margie Lee, Charlie Hancock

Baptisms

Baptisms are conducted multiple times throughout the year; outdoors at the Gregg Mill Bridge and indoors in our Baptistry.



On-Line Presence:

1



HOME ABOUT SUNDAY SERVICE GIVING MINISTRIES EVENTS CONTACT



Perry Chapel Social Media

- Perry Chapel Instagram - <https://www.instagram.com/perrychapelchurch>
- Perry Chapel Facebook - [Perry Chapel Baptist Church | Facebook](#)
- Women of Perry Chapel - [Private Facebook](#)
- Perry Chapel Youth Group - <https://www.PerryChapelBaptistChurch.com/youth-group.html>
- Pathfinders (Junior church)



Adult Connection Groups

- 3 Sunday Adult Classes
- Sunday Post High School Class
- Faith at Home - Curriculum for parents to share with their children at home
- Periodic Specialty Classes (scheduled as needed) PC 101, 201, 301, 401

Children's Sunday School Classes

- Nurseries - Infant, PreSchool & Kindergarten
- 1st- 3rd Grades
- 4th - 6thGrade
- Jr. High
- High School
- Post Secondary



Wednesday Night Family Night

Wednesday Night Activities



Fellowship Meal



Children's Programs

- Jr. High Youth
- Adult Bible Study
- Women's Bible Study

Ministries

Adult Ministries

Youth Group

Youth and Children's Ministries

Outreach Programs

Church Fellowship Activities

Adult Ministries

Nursing Home Visitation



Echoing Hills Visitation



Praise Team, Choir, Special Music & Christmas Cantata



Men's Prayer Breakfast



Bi-monthly-breakfast for prayer, accountability, and service

- Landscaping - A ministry to beautify the property and facilities that God has blessed us with
- Prison Ministry - A ministry to present the saving Gospel of Jesus to the incarcerated in jail or prison
- Greeters - A ministry of people to greet everyone, provide direction and assistance as they enter
- Valet Service - A ministry to allow physically disadvantaged people to enter the building and have their car parked for them
- One Call Prayer Chain - A program to inform the congregation via phone of prayer requests

Youth Group

The mission of Perry Chapel Youth Group is to create an atmosphere where junior high and high school students can be challenged to grow in their love for Jesus Christ, develop a passion for His Word, and a desire to live their lives for Him. Our goal is to help students have a place where they can encourage one another with a sense of community with brothers and sisters in Christ.



The youth group meets on Sunday nights and on Wednesday nights. On Sunday nights, we enjoy a meal together, worship, and dig into God's Word. Wednesday nights, we pick a book of the Bible to study. We are currently studying the book of Acts. Each summer we rotate youth trips between a mission trip (typically through Appalachian Regional Ministries), where the teens have led backyard Bible clubs, community

outreach and evangelism, assisted churches in need, and done door-to-door evangelism, or they attend a youth conference (such as the Christ in Youth conference). This gives the teens an opportunity to both grow and serve.

The youth serve in the church through youth led worship services, VBS, Dinner & a Movie, helping church members in need, Upward Basketball, fundraisers, and other events. They reach out to their community through Party at the Chapel (an evangelistic community outreach), singing at retirement homes, Christmas Caroling, volunteering to help individuals in need, and joining other local youth groups in community events. The youth group and many adult volunteers also attend Camp Patmos in the fall for a fall retreat.



Ultimately, through weekly youth group Bible studies, mentorship, mission trips, fellowship outings, evangelistic and ministry events, and service, the goal of Perry Chapel Youth Group is to cultivate Christ-like disciples who have a solid understanding of God's Word and live it out in their daily lives.

Summer Youth Trip 2025: Perry Chapel Youth Group and several adult volunteers attended the Christ in Youth MOVE Conference in Bowling Green, Ohio.



Party at the Chapel 2025:



Every year we host Party at the Chapel – an evangelistic outreach event where our youth can bring their friends to have good food, play games, and hear the Gospel message.



Good Friday Service 2025:



Every year our youth group leads the Good Friday service.



Senior Sunday



On Senior Sunday, we pray for our high school graduates as a church and present them with either a study Bible (unless they received theirs earlier) and other helpful Bible resources.



Barn Dance:



Every year we host a barn dance at the McKee Barn for junior high, high school, and young adults. As with all our activities, parents are welcome.



Fun activities like our Octaball court and ping pong table are a part of our youth group. We also take discipleship seriously and make time to spend time with the teens, dig into the Word with them, and encourage them to develop the spiritual gifts God has given them.

Camp Patmos:



Perry Chapel has been taking junior high and high school students to Camp Patmos on Kelley's Island for many years. We welcome parents to come as adult volunteers. Patmos is a great way to kick off the school year, digging into God's Word with

other church youth groups in a beautiful setting, where the teens can have fun, fellowship, and focus on Him.



Mission Trips: Every other year we take our teens on a mission trip. We welcome parents and families of our youth group. Our youth are not afraid to serve!



Prayer.



Service.



Evangelism.

VBS: Our whole church family gets involved in VBS. One of our favorite curriculums to use is Answers in Genesis. The teens love serving at VBS each summer, helping with music, puppets, skits, and support.



Formatted: Centered



Young Adult Ministry: After our students graduate, we have been striving to keep our young adults involved at Perry Chapel with Sunday school classes, summer Bible studies, and outings.

October 2024 Perry Chapel partnered with another church to host a **Young Adult Retreat at McKee Farm.**

“Train up a child in the way he should go, even when he is old, he will not depart from it.” Proverbs 22:6

“Let no one look down on your youthfulness, but rather in speech, conduct, love, faith and purity, show yourself an example of those who believe.”

1 Timothy 4:12

Outreach Programs

Upward Basketball - Upward Basketball was first started at Perry Chapel in 2003 in the newly completed multipurpose building. Pastor Dave Fowls had the vision to see a sports ministry started at our church. The goal was to bring the community together through a sports program, and at the same time, share the message of the Gospel to those who were lost. The program evolved over the years, and cheerleading was later added to the basketball ministry.

Many people have come to Perry Chapel to see their children, grandchildren, or relatives play basketball or cheer, and at the same time, hear God's Truth from a coach, devotion speaker, snack-shop worker or a church member they sat beside. God has truly worked through Perry Chapel's Upward Sports Ministry to reach our community for Christ.



Upward Snack Shop - A fund-raising ministry to support Upward Basketball



Millersport Sweetcorn Festival - A Fund-Raising ministry to support Upward Basketball program



Operation Christmas Child - A ministry to provide Christmas gifts to less fortunate children around the world in the name of Jesus

- **Christmas Food Box** - A ministry to provide food to families during the Christmas season
- **Deacons "We Care Fund"** - A ministry, administered by Deacons to provide food and funds to families in need
- **Food Pantry** - A ministry to provide food for people in our area; done in conjunction with Hope Center in Bladensburg

Church Fellowship Activities

- **Annual Church Picnic** - An opportunity to enjoy good food and fellowship with members and attenders of Perry Chapel at Warsaw's Riverview Park

Mother/Daughter Banquet - A ministry to honor our Mothers



- Christmas Candle Light Service
- Father-Son Banquet
- Ladies Quilting-Sewing Group
- Senior Lunch
- Women's Conferences
- Craft Show
- Christmas Caroling
- Father-Son Fellowship
- River Rafting Trips



Missions



Missions We Support

- Missionary Maintenance Service
- Dale & Debra Coates - MMS
- Coshocton Pregnancy Center
- Central Missionary Clearinghouse-Les Zerbe
- Christ's Love in Action (Jamaica)
- International Friendships
- Fellowship of Christian Athletes
- Codex Ministries (Cuba Connection)
- ABC Retired Ministers & Missionaries
- Buckeye Missions & Ministry
- Gideons

Budget Information

Perry Chapel Baptist Church

Budgeted Financial Position
9-30-2025

Budget Income

Regular Offerings	\$306,222
Sunday School Offerings	\$ 1,333
Interest Earned	\$ 24
CD Interest	\$ 15,522

Total YTD Budgeted Expenses \$325,186

Off Budget (Pass Through)

Income	\$ 82,528
Expense	\$ 52,176

Cash Assets Total \$300,000

Loans-Liabilities \$0

Personal Testimony Letters

When Rob retired from the Air Force, we moved here to take over the family farm. We had 4 girls all in school from kindergarten to high school. Once settled we began to look for a church. My Aunt suggested we try Perry Chapel because there were lots of families there with children of all ages.

The worship service was wonderful, the message was biblically sound, and the people were very welcoming. Rob and the girls really liked it. So, it seemed we found our little church in the hills. There was something there for all of us from youth, bible studies, family nights, and various ministries. We have been here ever since.

My personal passion is to "Feed the soul and Feed the body" thru bible study and a love for cooking. I decided to start a women's bible study and invite all the women in the church. The study group grew, and we did too as we studied God's word. I have been teaching for 25 years thanks to the encouragement and support of Pastor Dave Fowls.

My love for cooking came into play with the Upward Basketball program. With the help of a core group of people we organize and cook for hundreds of people who visit our Snack Shop every Saturday during the Upward season. Then we had the opportunity to get a permanent booth at the Millersport Sweet Corn Festival. All proceeds from there and the Snack Shop go towards the Upward program which is self-sufficient.

Then tragedy struck with the loss of our dear Pastor Dave during Covid. The congregation continued to serve the Lord the best way we knew how. God was faithful to watch over us during this difficult time. Eventually He led us, Pastor Bob Aldesperger. At the same time Bob felt God was leading him to Perry Chapel. He truly is a gift from God. He gently and compassionately led us through our grief. In true Perry Chapel fashion, we welcomed Bob and Diane into the family. It is obvious thru his sermons that he loves the Lord and is passionate about spreading the Gospel. Our prayers are with him as he deals with some medical issues.

Yes, Perry Chapel has a place for everyone. It is a place where I can "Feed the soul and Feed the body". Perry Chapel is "A place to call home!".

Why I like Perry Chapel is because of the people. In Proverbs 27:17 it states, "As iron sharpens iron, so one man sharpens another". Proverbs helps explain how I feel about friends at Perry Chapel. They somehow help you grow and make it through life's challenges. Pastor Dave led the way on this and then it just trickled down from there. I cannot tell you how many times I knew there were people praying for me or my family. My children were all raised attending this church and influenced by the members of this church. By God's grace they all are serving him as adults.

There is so much animosity in our world today towards each other. Somedays it is hard to even watch the news without seeing one more way Americans cannot get along with

In the Fall of 1979, my youngest son and I were driving out the lane to go to the church we had been attending for several years. Something told me to drive over the hill to Perry Chapel. So I went. I had never met Pastor Dave but, knew a few people in the congregation. The attendance was small, 30-40 people. The gospel was presented by Pastor Dave. After attending a few more times, I realized I did not really have a relationship with Christ. I rededicated my life to Jesus and was baptized. From then on, I grew spiritually with the guidance from Pastor Dave and the congregation. We outgrew our little country church and were able to build. My grandchildren and great grandchildren participated church for children, Wednesday family nights with a meal, youth groups, and upward basketball. I tried to never miss a game. Mission trips were done by our youth groups. There are also adult mission trips.

Our Pastor had a love for all his congregation. He met us all right where we were. Jesus gave us the love to return to Him. I cannot begin to count the blessings God has given me

Basketball brought us to Perry Chapel. It is funny to think about it that way. It sounds so unconventional but, it is our story. It was our Saturday morning visits to this dynamic church nestled in a secluded valley that initially drew us to look deeper into the people behind the ministry. What was it that attracted hundreds of visitors to this out-of-the-way building each week from January through March? How did this congregation have the manpower and the resources to minister to an entire rural community and run an outreach of this magnitude? There were an undeniable vibrancy and warmth that emanated from this church and it was magnetic. It was the Upward program that introduced our family to Perry Chapel but, it is the deep seeded sense of belonging and the genuine love for Christ that has kept us coming back for over eight years. The people of Perry Chapel opened their hearts and their homes to our family. They welcomed us in, they got us involved, and they encouraged us to use our gifts and talents to support Perry Chapel's vision of reaching far beyond the physical walls of the church building into the underserved parts of rural Coshocton, Knox, and Licking Counties. We cannot discount the solid Biblical teaching that we have received through Sunday School, Sunday morning worship, and Wednesday night fellowship. It is the substance behind those who volunteer and disciple. But in all honesty, it is the beautiful friendships that we have formed while ministering side by side with our brothers and sisters in Christ for these eight years that continues to draw us back week after week. It is family and it is the very essence of Perry Chapel.

My family has attended Perry Chapel for 20 years as active members. Pastor Dave Fowls came to our home one dark winter night those many years ago and led me and my wife to Christ which led to us becoming active members of Perry Chapel. At that time at least 3 rows of family and extended family members attended Perry Chapel.

For the last 10-15 years I have been the main lead in the sound room. Being an active Christian is important. I do not have what others can offer through mission work and ministry speaking but, I can help with the sound team, something I enjoy.

I have been a member of Perry Chapel for over 50 years, and I do not know how to begin to tell you how important that has been to me and my family. Even when we only had 30 to 40 members, the people were such loving, caring people that welcomed everyone. That is what helped the church grow to over 300 members and become such a big part of the community. Through births, deaths, graduations, weddings, and everything in between these wonderful people have been there to support my family. We have had wonderful teachers for Sunday school, Bible school, youth group and adult classes as well as being blessed with pastors who knew the Lord and preached directly from the Bible. I cannot imagine my life or the life of my kids and grandkids without this wonderful influence.

We started attending Perry Chapel nearly 8 years ago when we were invited to attend by the couple who sold us their house. We came and stayed for several reasons. It is a down-to-earth place where the people love Jesus, God's Word, and each other. Here, they have a heart for missions, both local and abroad, as well as host and support a large Upwards program. It is blessed to have a very fruitful youth ministry led by a couple who truly care about what they do. It is blessed with gifted musicians and some of the best cooks around.

In the past 5 years, we've experienced some difficult times as a church, yet the elders and the congregation have kept things going as normal as possible. With God's grace, it is the "little church that could."



Loving God, Loving You